

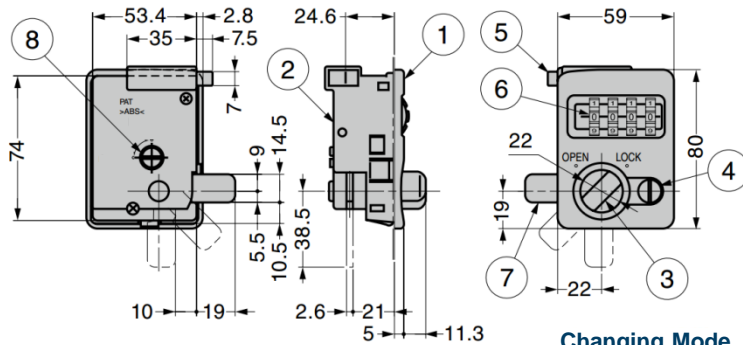
## GDIT-19 Cabinet Lock With Dial

### Features

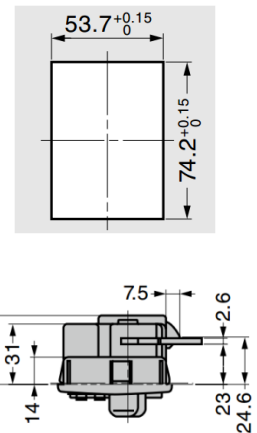
- Turn the dial to lock/unlock
- One-touch installation
- Able to switch between *Changing Mode* or *Fixing Mode*:  
*Changing Mode* - Changes the key number according to users  
*Fixing Mode* - Use the same number as registered
- Case with latch
- Possible to search the number to unlock with Search Key (sold separately)
- Possible to engrave any number on body above the dial

### Notes

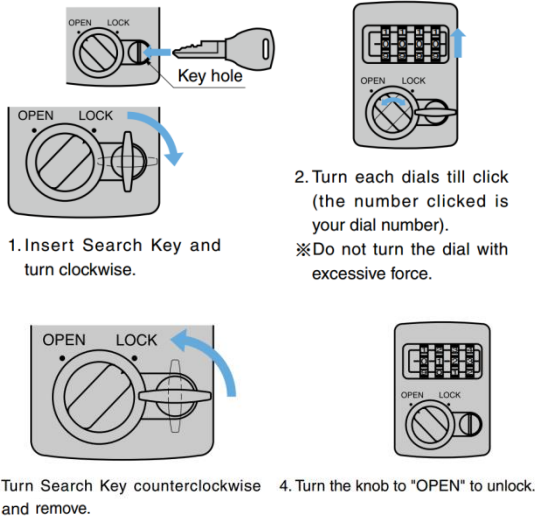
- For setting work, turn the dial to the password being used and open the door
- First dial number is "0000"
- For security, please turn all dials when locking
- Adjust number along the centre line to avoid malfunction
- For sheet metal use. For wood installation, a bracket for door thickness 8 ~ 18mm is available (made-to-order)



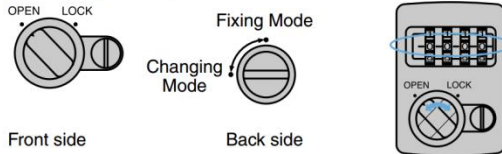
### Cut-Out Dimensions



### How to search dial number using search key

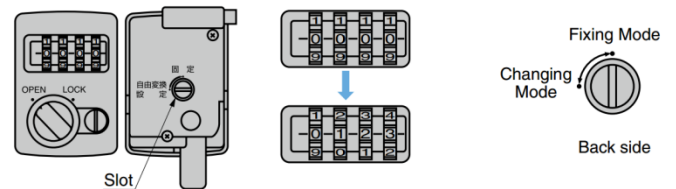


### Changing Mode



1. Turn the knob to "OPEN" on front side. Turn the slot to "Changing Mode" on back side.
2. Set new number and turn the knob to "LOCK" on front side.

### Fixing Mode



1. Turn the knob to "OPEN" on front side. Turn the slot to "Changing Mode" on back side.
  2. Set new number.
  3. Turn the slot to "Fixing Mode" on back side.
- ※Before setting new number, please open the door.

Part No.	Description	Door Thickness
GDIT-19	Lock	0.8

Part No.	Description
GDIT-SK	Search Key

No.	Part Name	Material	Finish/Colour
①	Body	ABS	White
②	Case		
③	Knob		
④	Cover		
⑤	Latch	POM	
⑥	Dial	PC	-
⑦	Cam	Steel (SPCC)	Coloured Zinc Chromate
⑧	Switching Shaft	PC	-